



## Supplemental Materials for

**An analysis of patterns and predictors of self-reported common mental disorders in Ibadan Metropolis, Nigeria**

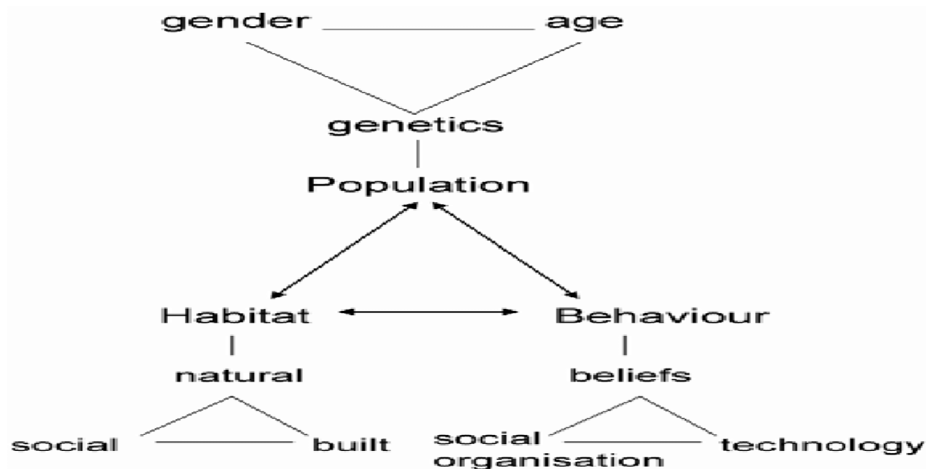
<https://doi.org/10.35502/jcswb.340>

Adeniyi Sunday Gbadegesin and Godwin O. Ikwuyatum

**Correspondence to:** Adeniyi S. Gbadegesin, Department of Geography, University of Ibadan, Ibadan, Nigeria. Telephone: +234 803 064 4008. E-mail: [ibadan/gbadegesinadeniyi@gmail.com](mailto:ibadan/gbadegesinadeniyi@gmail.com)

## Listing of Supplemental Material(s):

- Figure S1: The Human Ecology of Disease Triangle
- Table S1: Socio-economic/Demographic Characteristics
- Table S2: Spatial autocorrelation (Global Moran's I) of Common Mental Disorder Cases in Ibadan Metropolis
- Figure S2: The Study Area
- Figure S3a: Global Moran's I of Overall Cases of Common Mental Disorders in Ibadan Metropolis
- Figure S3b: Cases of Common Mental Disorders in Ibadan Metropolis
- Figure S3c: Global Moran's I of Female Cases of Common Mental Disorders in Ibadan Metropolis
- Figure S3d: Females Cases of Common Mental Disorders in Ibadan Metropolis
- Figure S3e: Global Moran's I of Male Cases of Common Mental Disorders in Ibadan Metropolis
- Figure S3f: Males Cases of Common Mental Disorders in Ibadan Metropolis
- Figure S4a: Local Moran's I Analysis of Overall Cases of CMD
- Figure S4b: Hotspot Analysis of Overall Cases of CMD
- Figure S4c: Local Moran's I Analysis of Female CMD Cases
- Figure S4d: Hotspot Analysis of Female CMD Cases
- Figure S4e: Local Moran's I Analysis of Male CMD Cases
- Figure S4f: Hotspot Analysis of Male CMD Cases
- Table S3: Variables of Multiple Regression Analysis



**Figure S1: The Human Ecology of Disease Triangle, Source: (Meade and Earickson, 2000)**

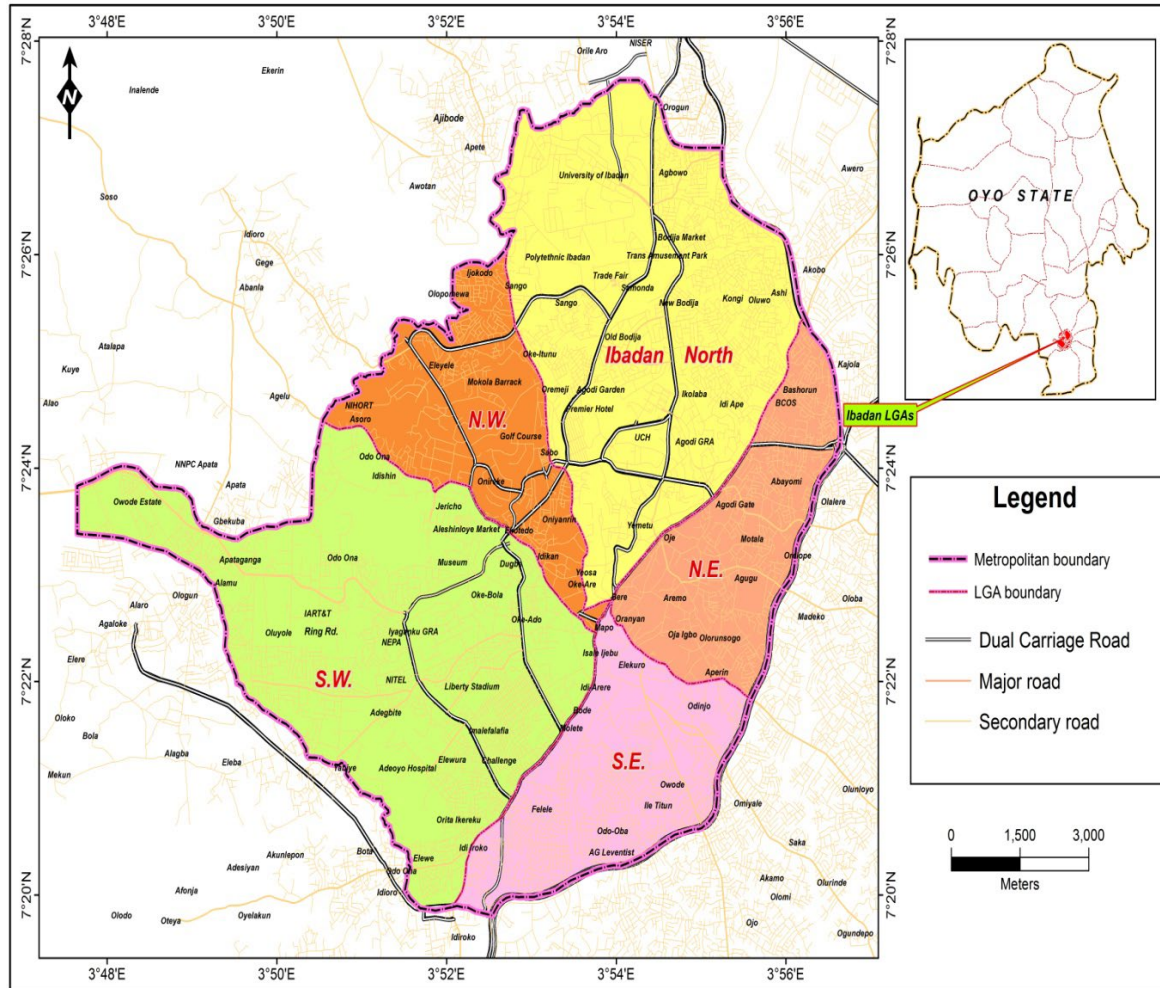
**Table S1:** Socio-Economic/Demographic Characteristics

Variables	Category	Male (%)	Female (%)
Age	Less than 40 years	148 (23.6)	163 (28.5)
	40-59 years	417 (66.4)	360 (62.9)
	60-79 years	62 (9.9)	49 (8.6)
	above 79 years	1 (0.2)	0 (0)
Education	Primary School	138 (22)	143 (25)
	Secondary School	223 (35.5)	215 (37.6)
	Higher Institution	267 (42.5)	214(37.4)
Ethnicity	Yoruba	521 (83)	494 (86.4)
	Hausa	24 (3.8)	12 (2.1)
	Igbo	83 (13.2)	66 (11.5)
Monthly income	Less than N30,000	123 (19.6)	174 (30.4)
	30,000-49,999	228 (36.3)	213 (37.2)
	50,000-69,999	150 (23.9)	97 (17)
	70,000 and above	127 (20.2)	88 (15.4)
Marital Status	Single	3 (0.5)	1 (0.2)
	Married	596 (94.9)	532 (93)
	Widowed	18 (2.9)	21 (3.7)
	Separated	11 (1.8)	18 (3.1)

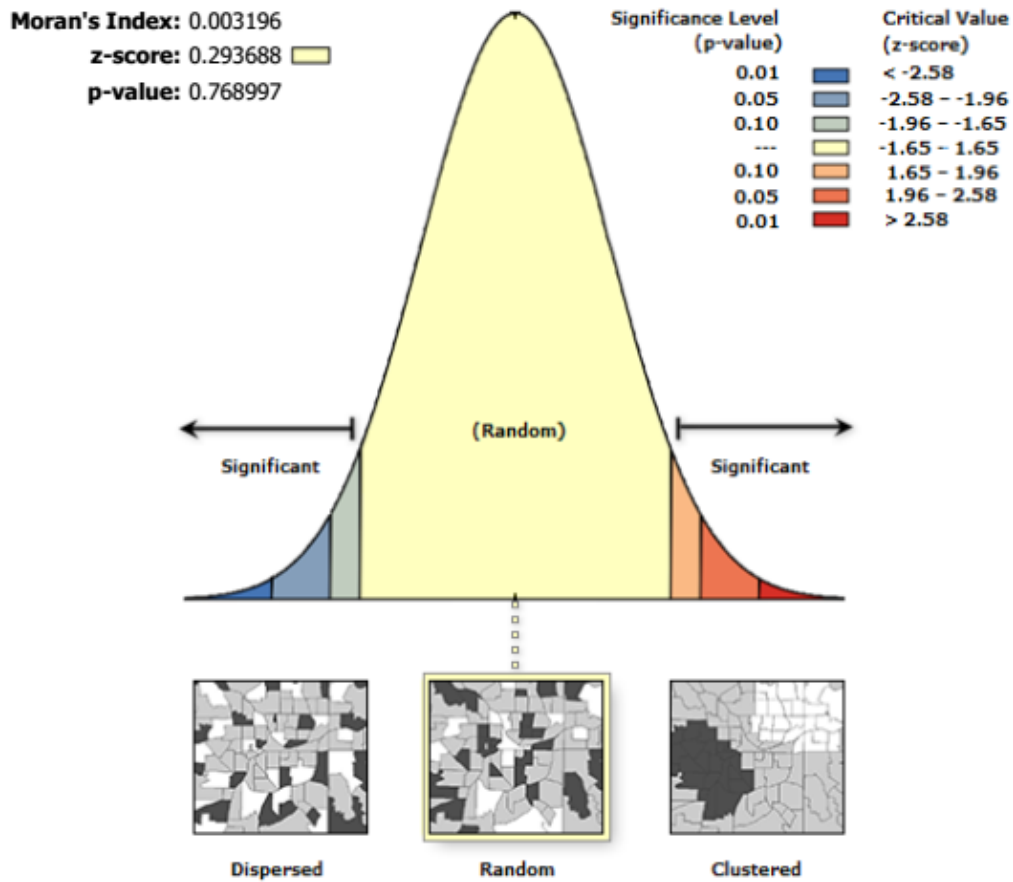
Household Size	1 to 3	54 (8.6)	55 (9.6)
	4 to 6	446 (71)	412 (72)
	Above 6	128 (20.4)	105 (18.4)
Employment status	Employed	207 (33)	207 (36.2)
	Unemployed	1 (0.2)	7 (1.2)
	Retired	17 (2.7)	9 (1.6)
	Self-employed	403 (64.2)	349 (61)
Employment Type	Informal sector	433 (68.9)	380 (66.4)
	Formal sector	195 (31.1)	192 (33.6)
Occupation	Civil Servant	211 (33.6)	201 (35.1)
	Artisan	67 (10.7)	45 (7.9)
	Student	1 (0.2)	3 (0.5)
	Trading	302 (48.1)	276 (48.3)
	Professional	47 (7.5)	47 (8.2)
Migration Status	Rural-urban Migrant	234 (37.3)	223 (39)
	Urban non- migrant	394 (62.7)	349 (61)

**Table S2: Spatial autocorrelation (Global Moran's I) of Common Mental Disorder Cases in Ibadan Metropolis**

<b>CMD</b>	<b>Z-Score</b>	<b>P-Value</b>	<b>Global Moran's Index</b>	<b>Variance</b>	<b>Expected Index</b>	<b>Interpretation of pattern</b>
Overall	0.2937	0.7689	0.0032	0.0019	-0.0098	Random
Female	0.7055	0.4805	0.0214	0.0019	-0.0098	Random
Male	-0.2666	0.7898	-0.0216	0.0019	-0.0098	Random



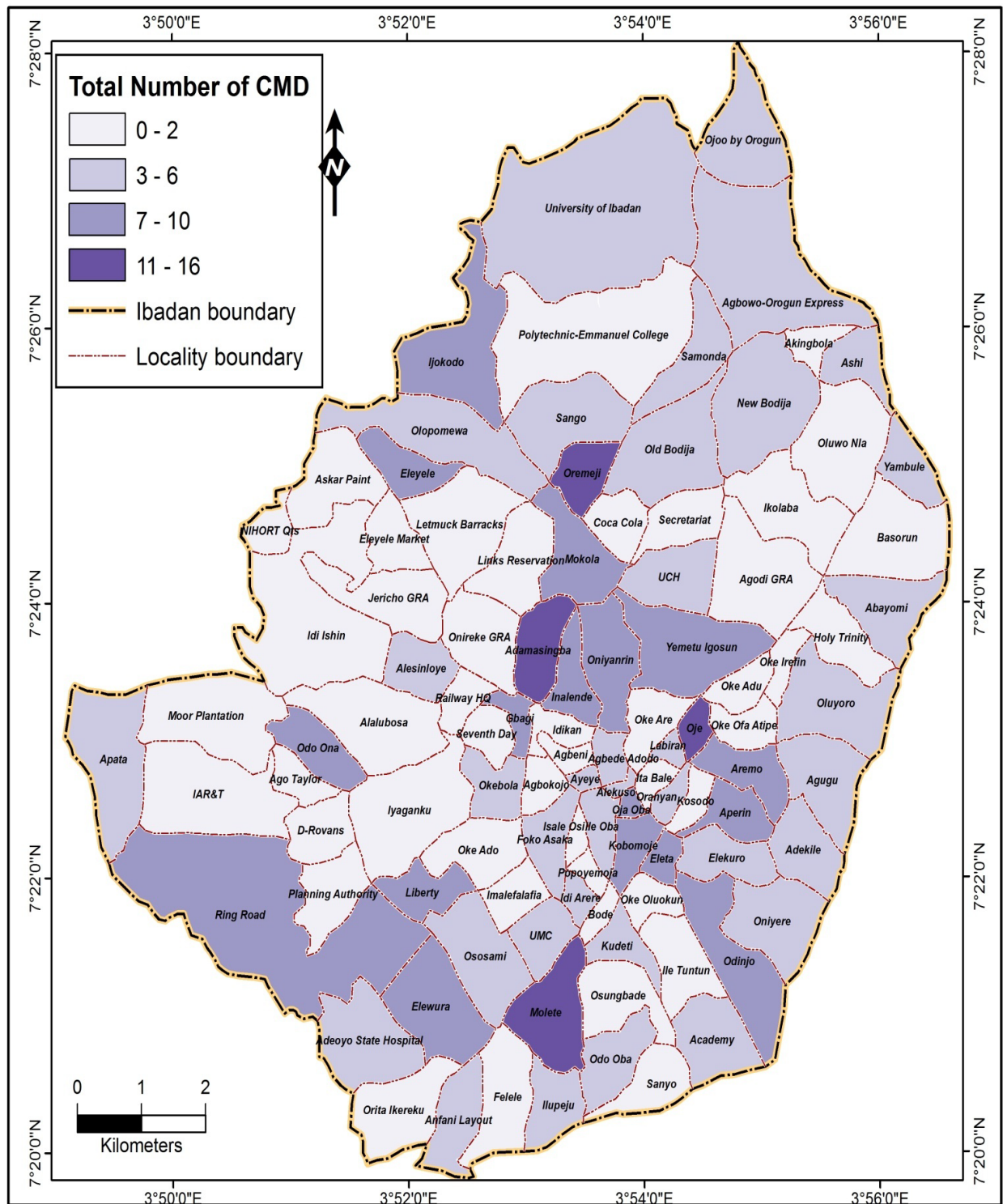
**Figure S2: The Study Area**



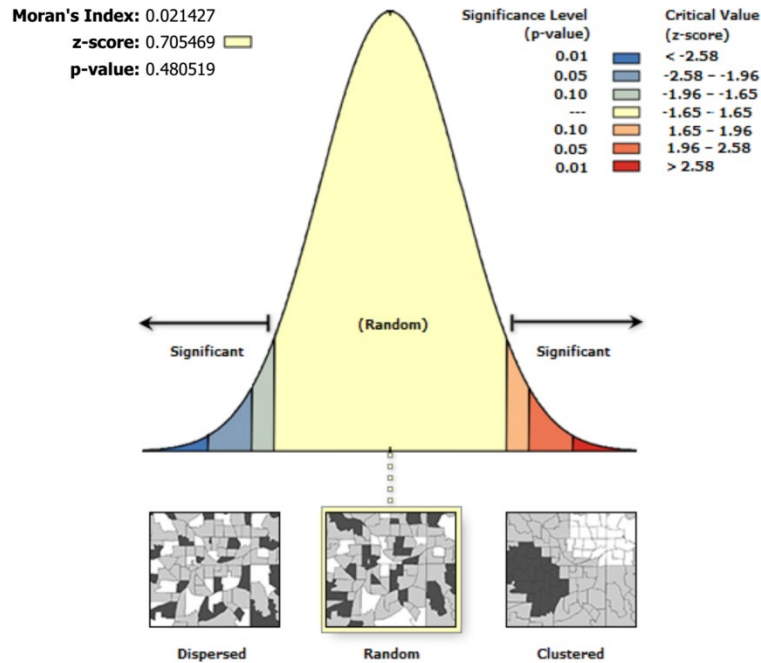
Given the z-score of 0.29368758496, the pattern does not appear to be significantly different than random.

**Figure. S3a: Global Moran's I of Overall cases of Common Mental Disorders in Ibadan Metropolis**



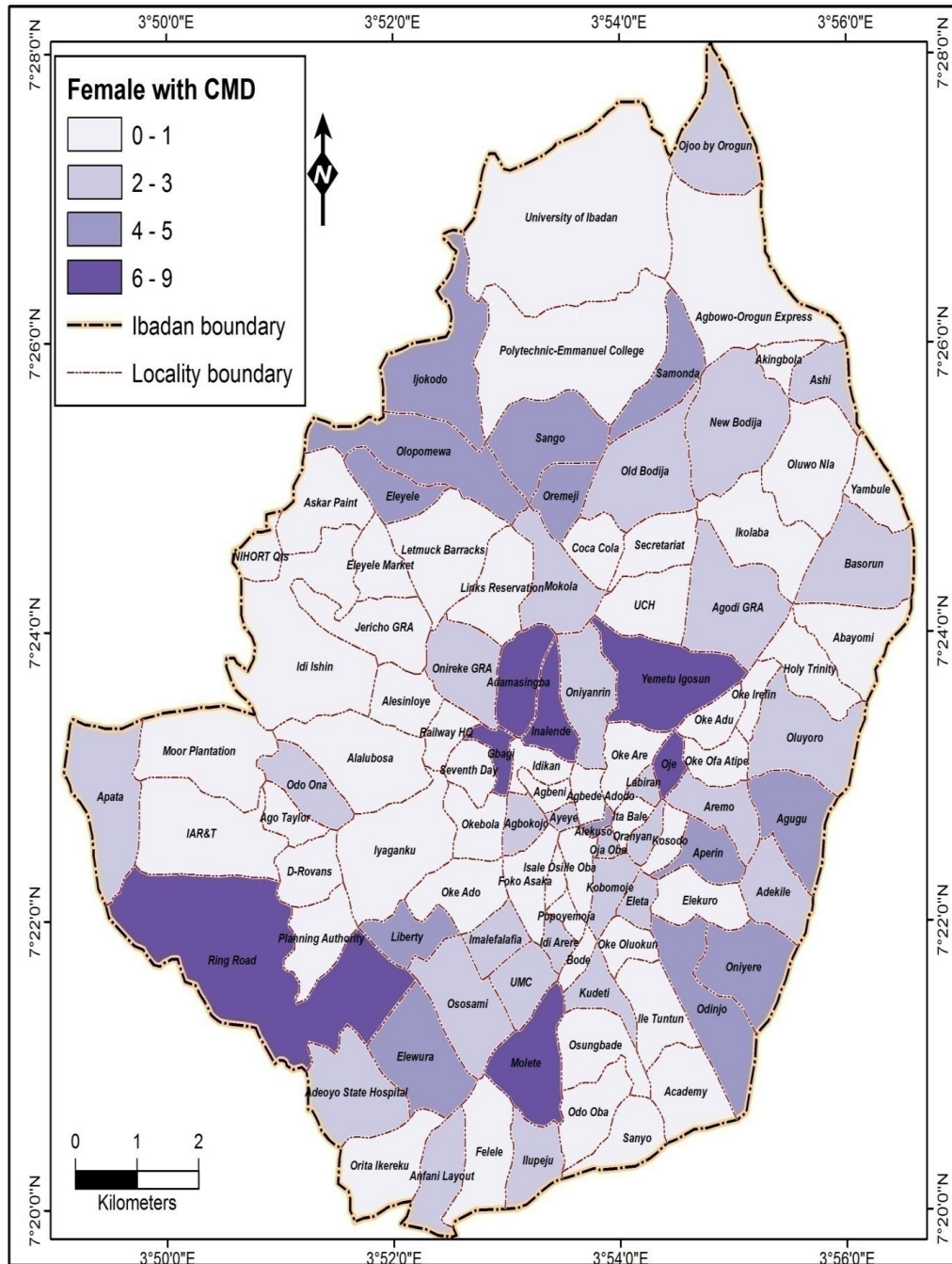


**Figure S3b: Cases of Common Mental Disorders in Ibadan Metropolis**

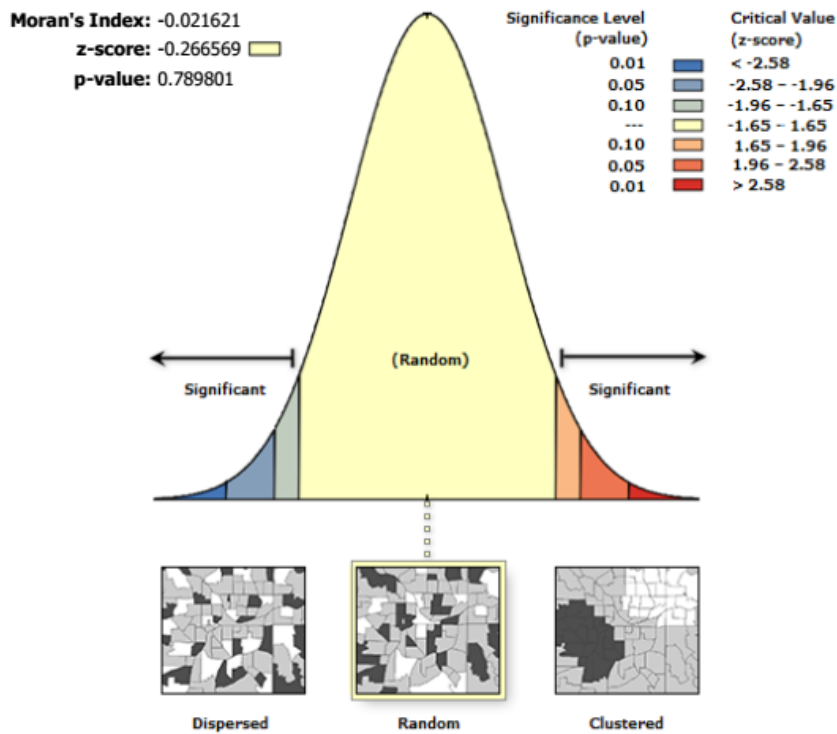


Given the z-score of 0.705468579469, the pattern does not appear to be significantly different than random.

**Figure S3c: Global Moran's I of Female cases of Common Mental Disorders in Ibadan Metropolis**

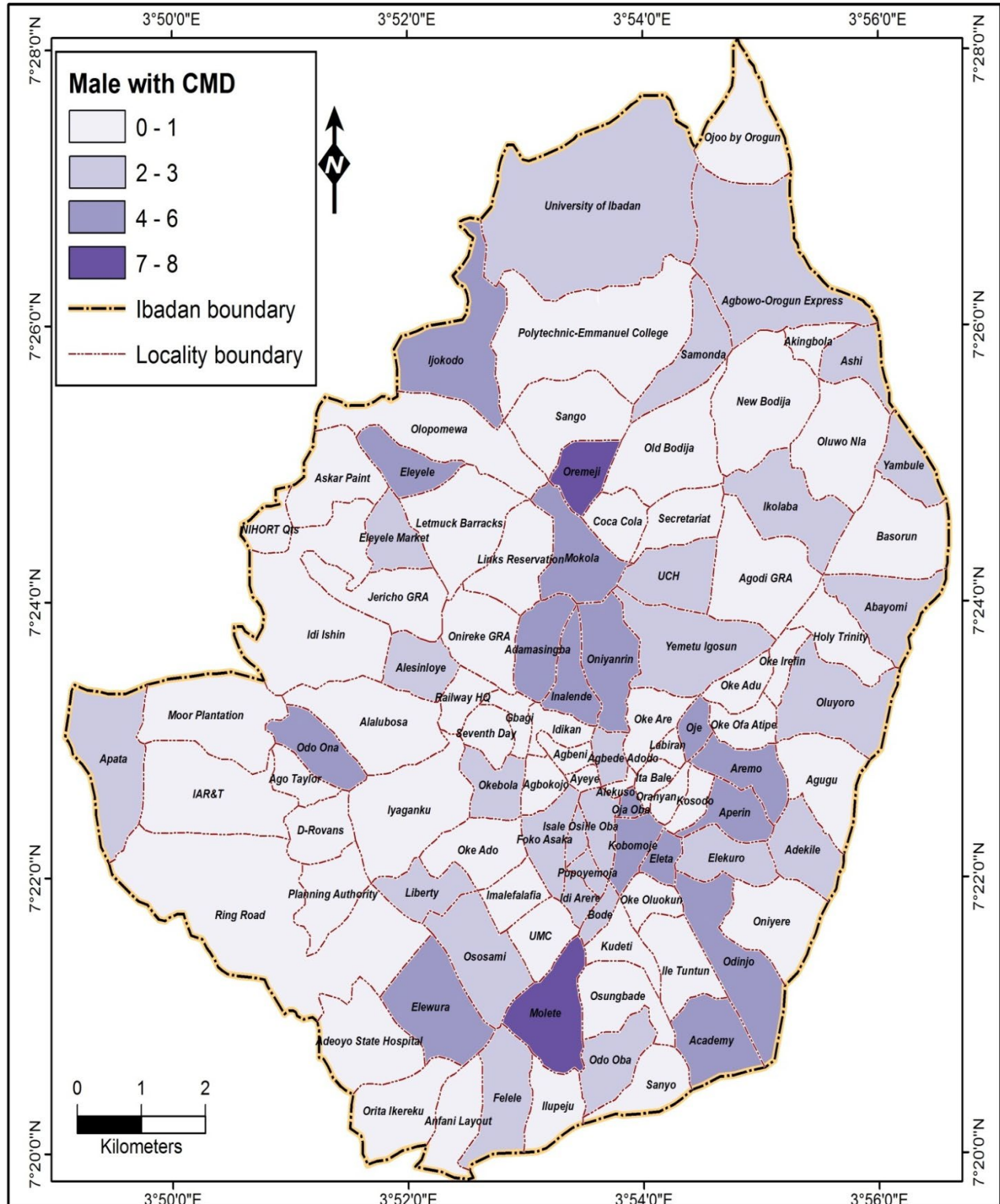


**Figure S3d: Females Cases of Common Mental Disorders in Ibadan Metropolis**

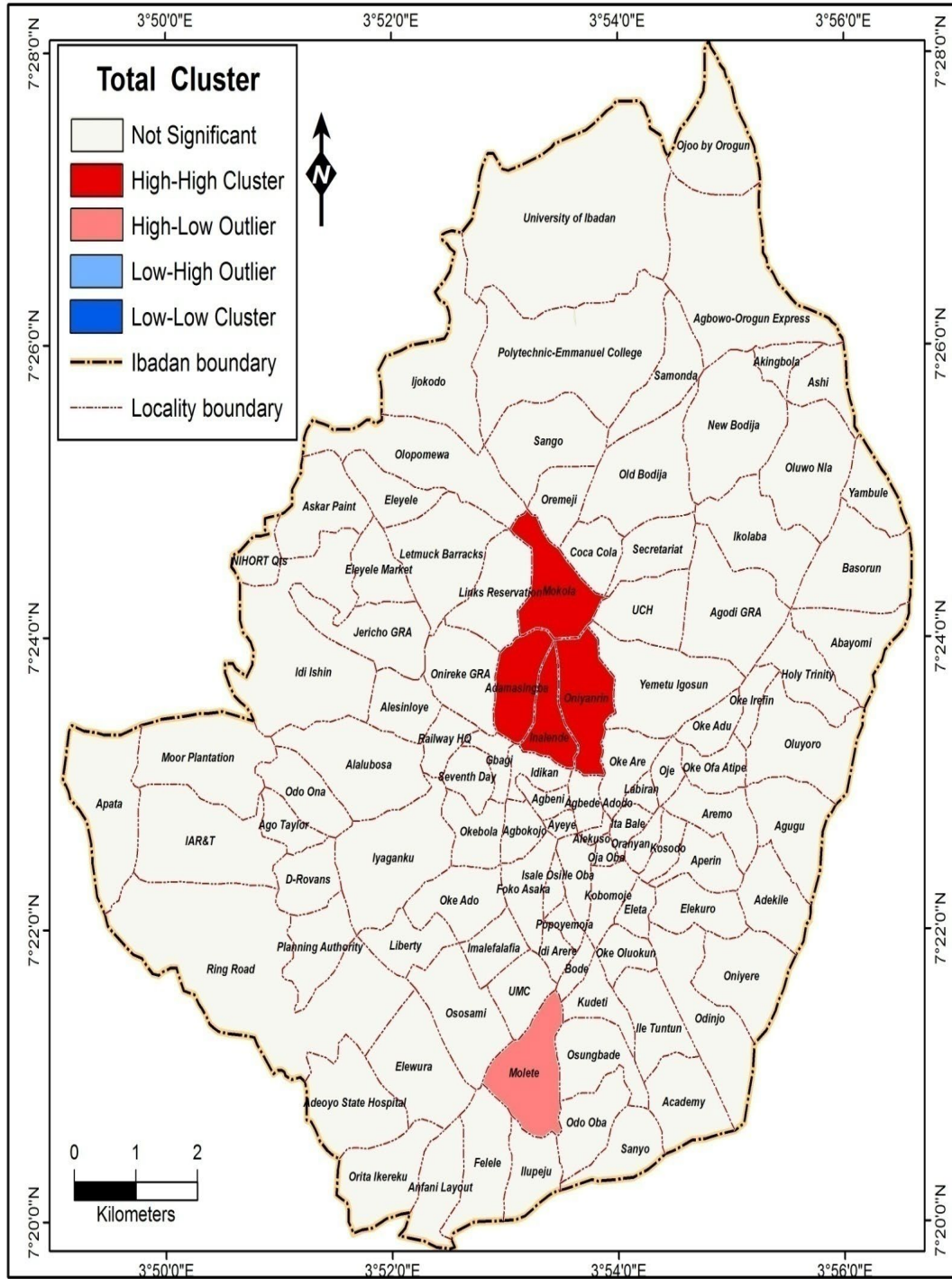


Given the z-score of -0.266568560251, the pattern does not appear to be significantly different than random.

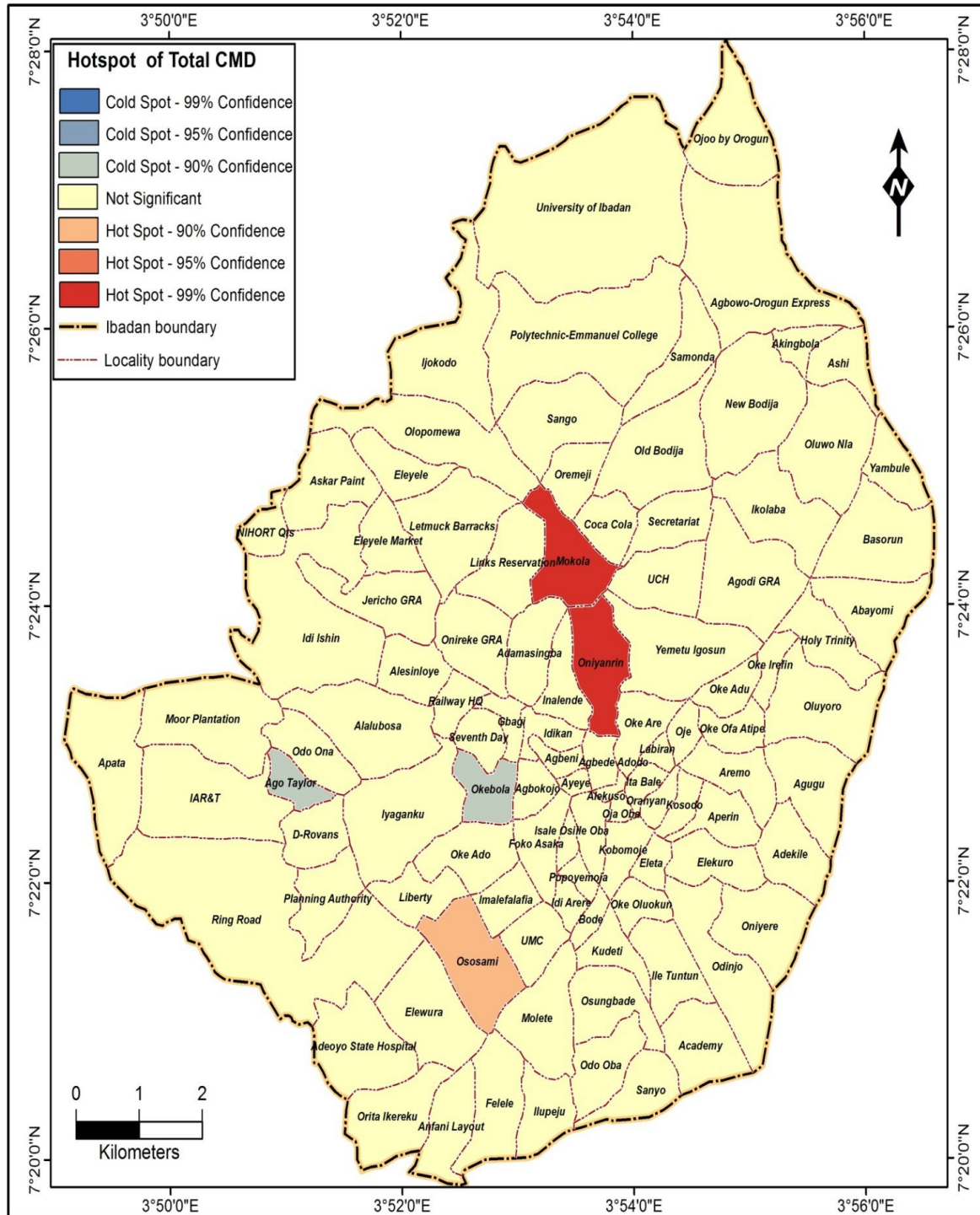
**Fig S3e: Global Moran's I of Male cases of Common Mental Disorders in Ibadan Metropolis**



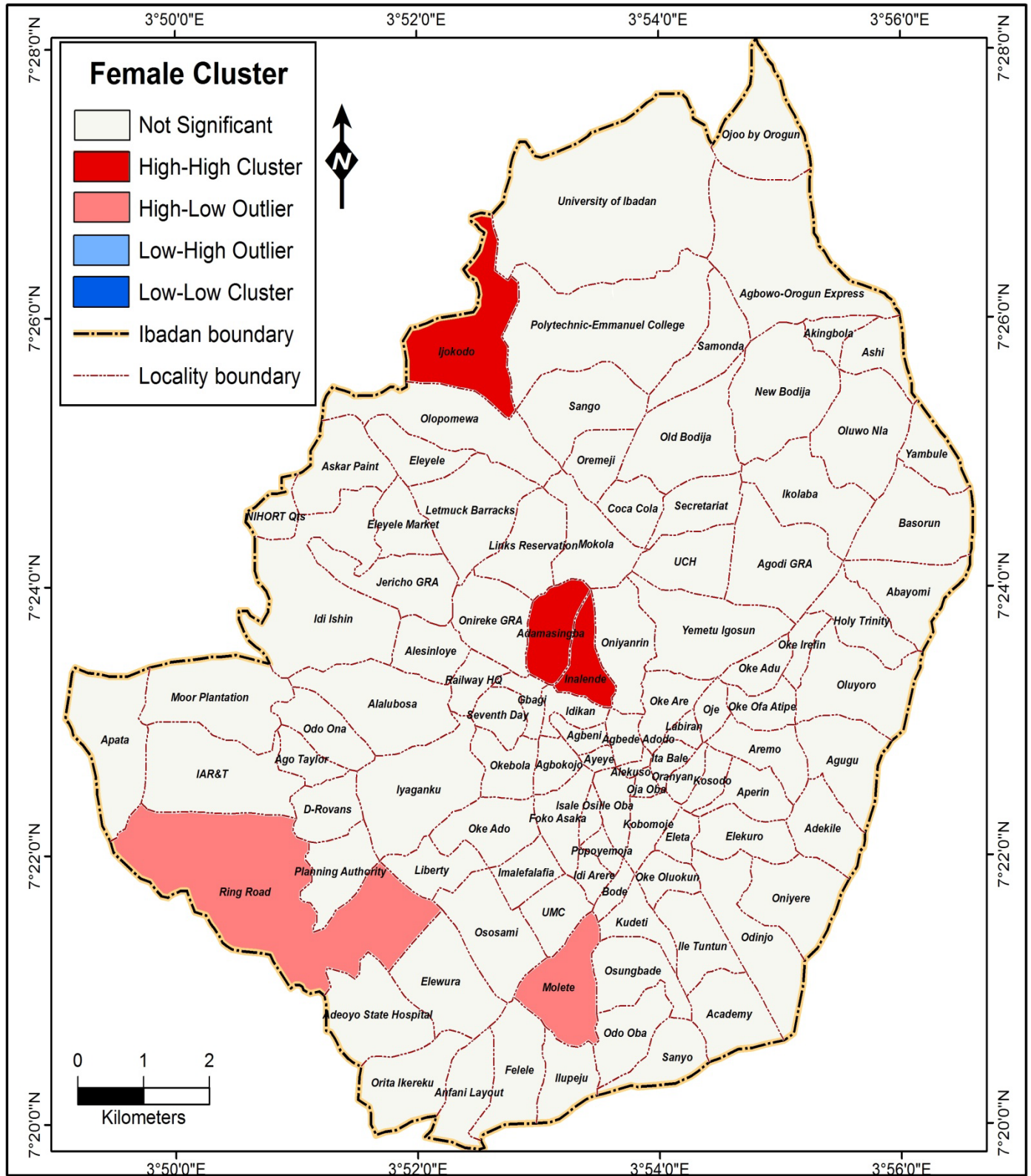
**Figure S3f: Males Cases of Common Mental Disorders in Ibadan Metropolis**



**Figure S4a: Local Moran's I Analysis of Overall cases of CMD**

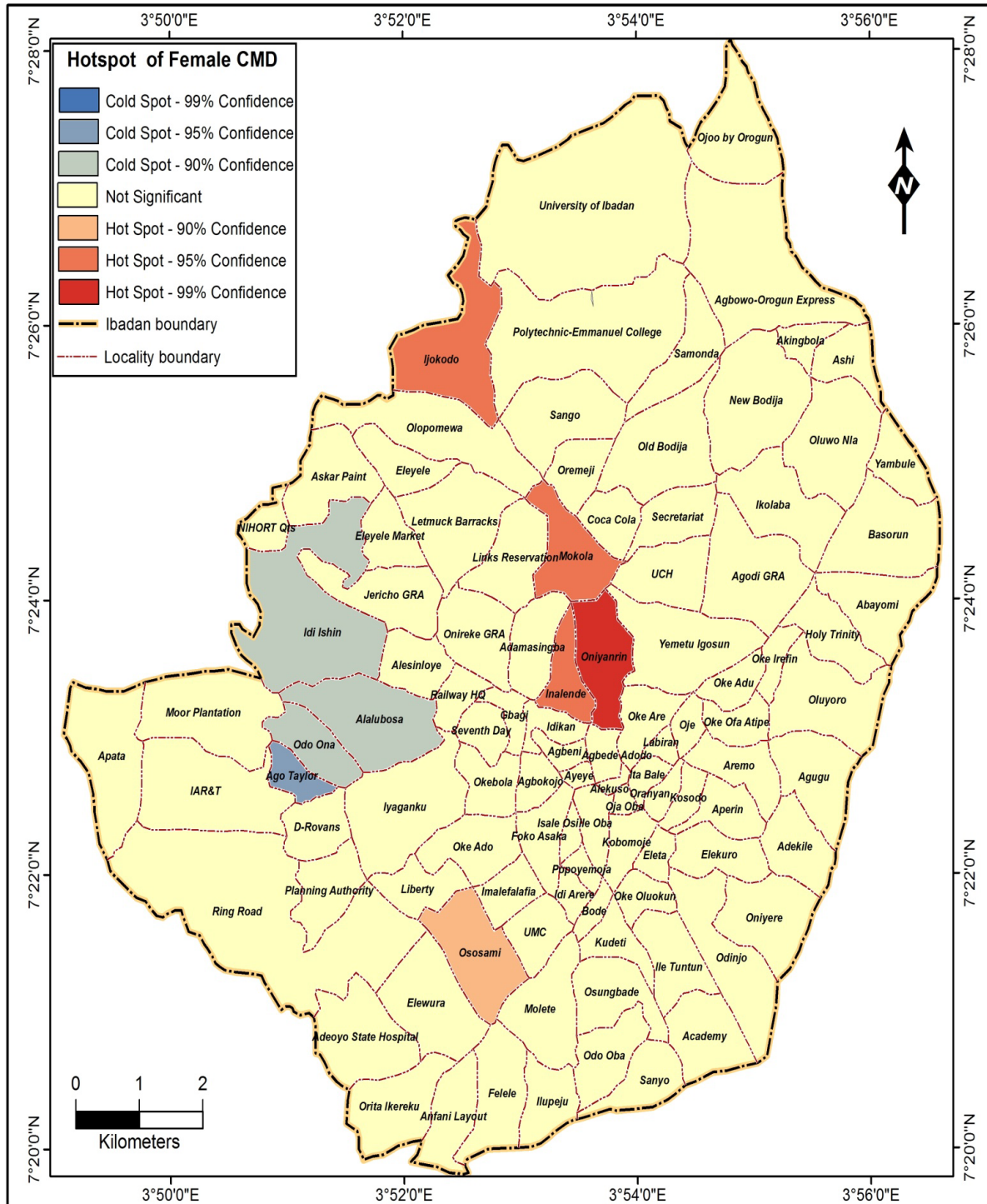


**Figure S4b: Hotspot Analysis of Overall cases of CMD**

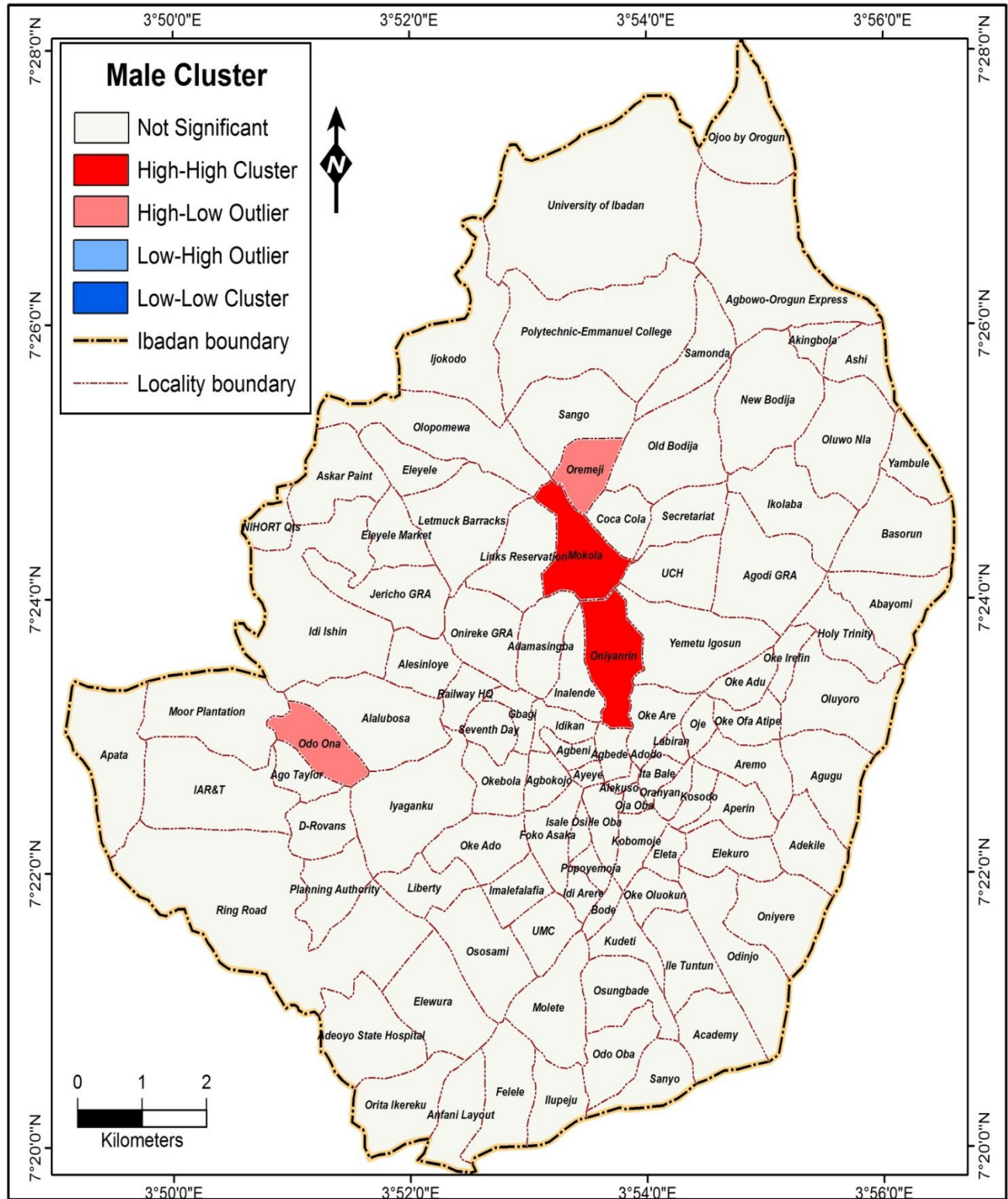


**Figure S4c: Local Moran's I Analysis of Female CMD cases**

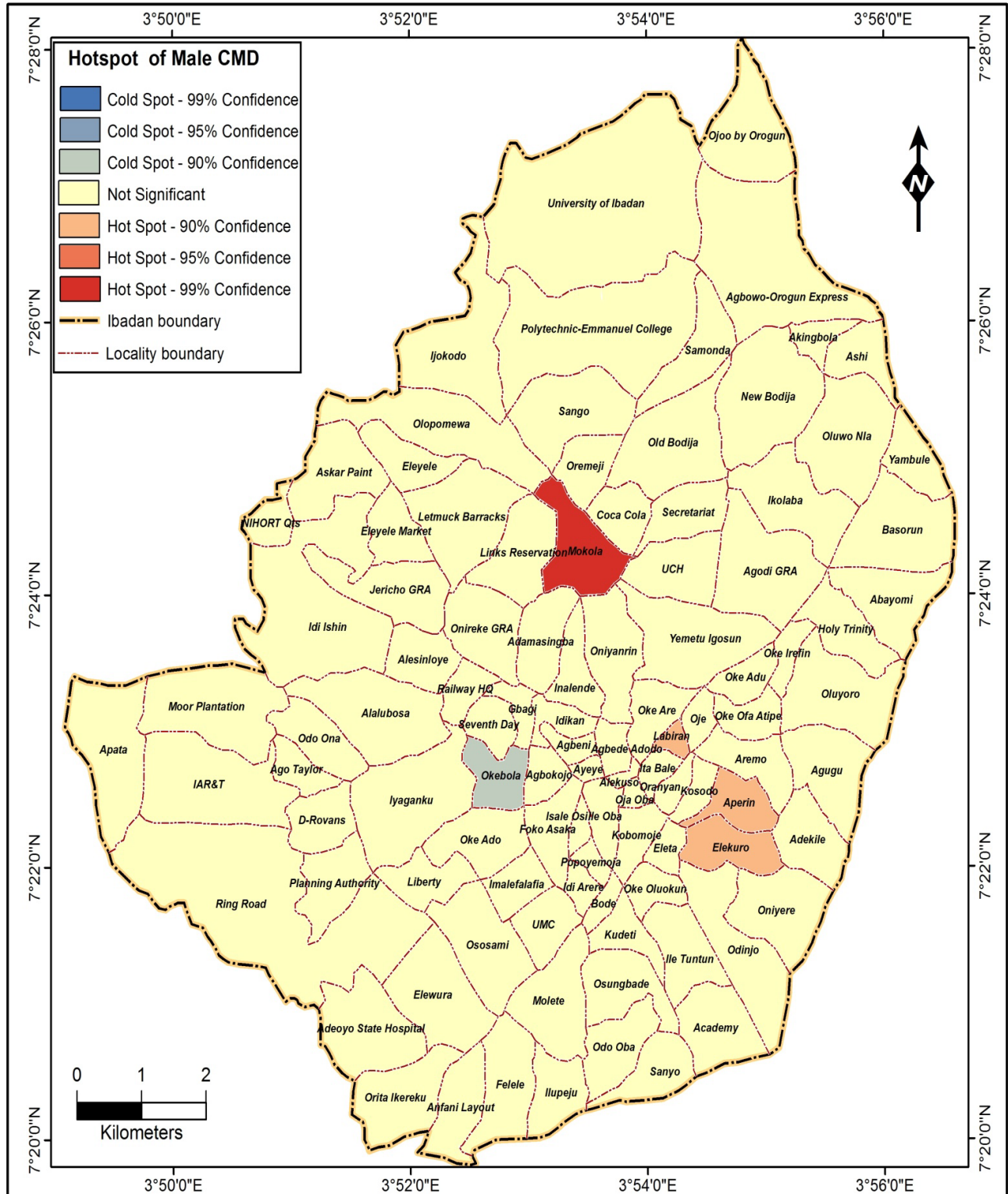




**Figure S4d: Hotspot Analysis of Female CMD cases**



**Figure S4e: Local Moran's I Analysis of Male CMD cases**



**Figure S4f: Hotspot Analysis of Male CMD cases**

**Table S3: Variables of Multiple Regression Analysis**

S/No	Model	B	T	Sig
	(Constant)		7.258	0.000
1	Gender	-0.004	-0.169	0.866
2	Age	0.037	1.498	0.134
3	Education	0.028	1.039	0.299
4	Monthly income in naira	0.003	0.14	0.889
<b>5</b>	<b>Recreational participation</b>	<b>-0.071</b>	<b>-2.744</b>	<b>0.006</b>
<b>6</b>	<b>Quality of life</b>	<b>-0.205</b>	<b>-2.138</b>	<b>0.24</b>
7	Household size (in number)	-0.041	-1.659	0.097
8	Employment (Employed)	-0.006	-0.268	0.789
	Employment (unemployed)	-0.004	-0.167	0.867
	Employment (self employed)	0.082	1.119	0.369
	Employment (retired)	0.017	0.718	0.473
<b>9</b>	<b>Migration status</b>	<b>-0.054</b>	<b>-2.209</b>	<b>0.027</b>
<b>10</b>	<b>Food insecurity</b>	<b>-0.198</b>	<b>-2.746</b>	<b>0.03</b>
11	Housing quality (high)	0.011	0.171	0.864
12	Housing quality (medium)	-0.014	-0.508	0.612
<b>13</b>	<b>Housing quality (low)</b>	<b>-0.061</b>	<b>-2.38</b>	<b>0.017</b>
14	Overcrowding	-0.021	-0.828	0.408

<b>15</b>	<b>Flood-prone residence</b>	<b>0.453</b>	<b>12.292</b>	<b>0.000</b>
<b>16</b>	<b>Green space</b>	<b>-0.057</b>	<b>-2.183</b>	<b>0.029</b>
17	Social Capital	0.002	0.102	0.919
<b>18</b>	<b>Self-rated health</b>	<b>-0.134</b>	<b>-5.585</b>	<b>0.000</b>
<b>19</b>	<b>Spousal violence</b>	<b>0.199</b>	<b>8.067</b>	<b>0.000</b>
20	Frequent transport medium	-0.022	-0.839	0.402

R = 0.599, R<sup>2</sup> = 0.358, Adj. R = 0.348, F = 34.201, P = 0.000